



TEACHER OF MATHS

JOB TITLE:	TEACHER OF MATHS
HOURS:	FULL or PART TIME
REPORTS TO:	DEPUTY HEADTEACHER / HEADTEACHER
SALARY RANGE:	TEACHERS' PAY SCALE (MPS - UPS)

Aim and main purpose of the job:

- To teach, enthuse and inspire pupils about Maths to GCSE Level.
- Fulfil the professional responsibilities of a teacher, as set out in the School Teacher's Pay and Conditions Document (STPCD).
- Meet the expectations set out in the Teacher's Standards.
- Fulfil duties reasonably directed by the Headteacher.

Teaching and Managing Pupil Learning:

Teacher of Maths will:

- Be able to teach effectively across the full range of age and abilities.
- Possess high expectations of pupils in relation to standards of achievement and behaviour.
- Have an active input in the creation, consistent implementation, and improvement of schemes of work which encapsulate key school learning strategies.
- Monitor the progress of pupils including those requiring additional support and challenge them to ensure pupils are engaged in their learning and achieve success.

Assessment and Self-Evaluation:

Teacher of Maths will:

- Implement policies and practices for assessing, recording, and reporting on pupil achievement and to assist in setting targets for further improvement.
- Use data effectively to identify pupils who are underachieving and, where necessary, create and implement an effective intervention plan.

Relationship with Parents:

Teacher of Maths will:

- Establish a partnership with parents to involve them in their child's learning of the subject, as well as providing information about targets and attainment.
- Communicate effectively, both orally and in writing, with parents.

Managing Own Performance:

Teacher of Maths will:

- Prioritise and manage their own time effectively.
- Take responsibility for their own professional development.
- Share good practice resulting in a tangible impact on pupil learning.
- Form constructive relationships with staff including team working and mutual support.
- Actively implement the key aspects of the school's behaviour management policies.
- Contribute to the wider school life including Maths enrichment activities.
- Contribute to department planning and developments.

Strategic Leadership:

Teacher of Maths will:

- Contribute fully to our Centre Development.
- Contribute to the development of whole school strategic planning and policies.

Equalities

Be aware of and support difference and ensure that pupils have equality of access to opportunities to learn and develop.

Health & Safety

Be aware of and comply with policies and procedures relating to child protection; health and safety; confidentiality; and data protection and report all concerns to an appropriate person.

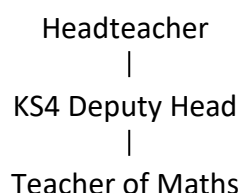
Disclosure & Barring Service

This post is classed as having a high degree of contact with children or vulnerable adults and is exempt from the Rehabilitation of Offenders Act 1974. An enhanced disclosure will be sought through the Disclosure & Barring Service as part of Hertfordshire County Council's pre-employment checks.

Additional Information

The jobholder is required to contribute to and support the overall aims and ethos of the centre. All staff are required to participate in training and other learning activities, and in performance management and development as required by the centre's policies and practices.

Organisation Chart



Supervision

The post holder is line managed by the KS4 Deputy Headteacher. The frequency of meetings is determined by the centre's performance management policies and practice.

Contacts

The post holder works directly with teachers, centre staff and pupils and has routine and regular contact with parents and carers and with external agencies and other professionals.

The duties and responsibilities listed above describe the post as it is at present. The post holder is expected to accept any reasonable alterations that may from time to time be necessary; this may include working across all sites when needed. The Teacher of English works under the direction of the Assistant Headteacher and is accountable to the KS3 Deputy Headteacher who will delegate areas of responsibility as required. The Assistant Headteacher is responsible for the Teacher of English performance management. This job description may be amended at any time after full consultation, but in any case will be reviewed annually.